



Preheat T8

F15T8/CW 25PK

Philips leads the industry with the lowest level mercury technology. Reducing the mercury level (source reduction) during the manufacturing phase is essential to creating products that are less harmful to the environment.

Warnings and Safety

· Lamp contains mercury. Manage in Accord with Disposal Laws. See: www.lamprecycle.org or 1-800-555-0050

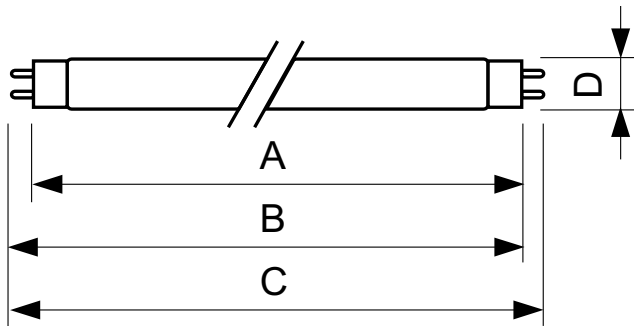
Product data

General Information	
Base	G13 [Medium Bi-Pin Fluorescent]
Life To 10% Failures (Nom)	10000 h
Life to 50% Failures (Nom)	13000 h
Features	ALTO® (ALTO)
Light Technical	
Color Code	33-640
Initial lumen (Nom)	830 lm
Color Designation	Cool White (CW)
Lumen Maintenance 10000 h (Nom)	75 %
Lumen Maintenance 2000 h (Nom)	90 %
Lumen Maintenance 5000 h (Nom)	80 %
Correlated Color Temperature (Nom)	4100 K
Color Rendering Index (Nom)	63
Operating and Electrical	
Power (Rated) (Nom)	15.5 W
Lamp Current (Nom)	0.335 A
Voltage (Nom)	55 V

Controls and Dimming	
Dimmable	Yes
Mechanical and Housing	
Cap-Base Information	Green [Green Cap]
Approval and Application	
Mercury (Hg) Content (Nom)	2.0 mg
Product Data	
Order product name	F15T8/CW 25PK
EAN/UPC - Product	046677367206
Order code	407197
Numerator - Quantity Per Pack	1
Numerator - Packs per outer box	25
Material Nr. (12NC)	928022803325
Net Weight (Piece)	59.600 g

Preheat T8

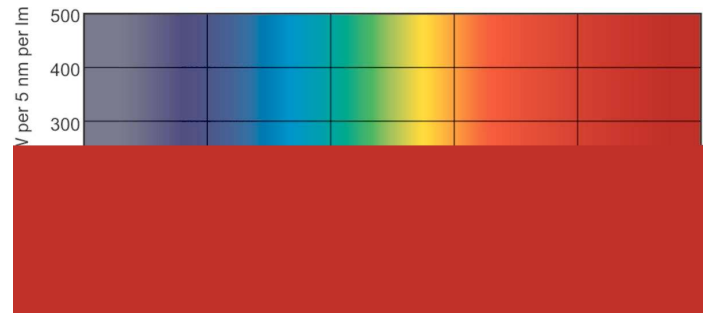
Dimensional drawing



TL-D F15T8 Cool White/GC ALTO

Product	D (max)	A (max)	B (max)	B (min)	C (max)
F15T8/CW 25PK	28 mm	437.4 mm	444.5 mm	442.1 mm	451.6 mm

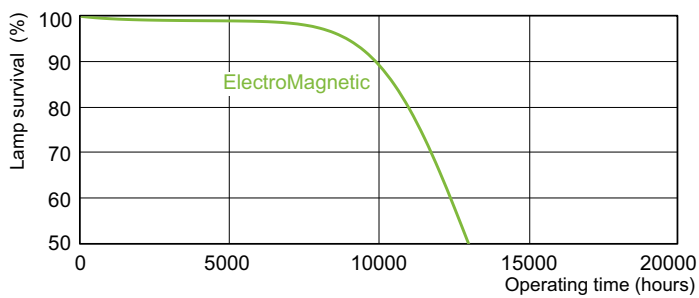
Photometric data



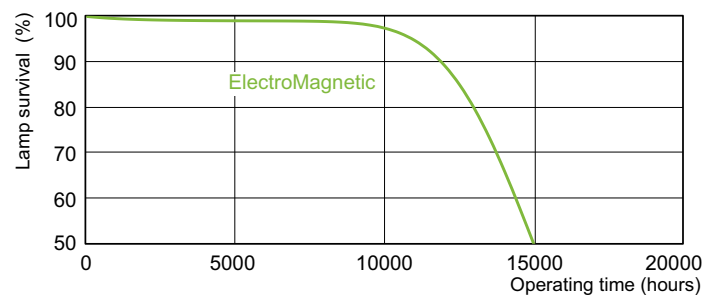
LDPB_TL-DSTD_33-640_0001-Spectral power distribution B/W

LDPO_TL-DSTD_33-640_0001-Spectral power distribution Colour

Lifetime



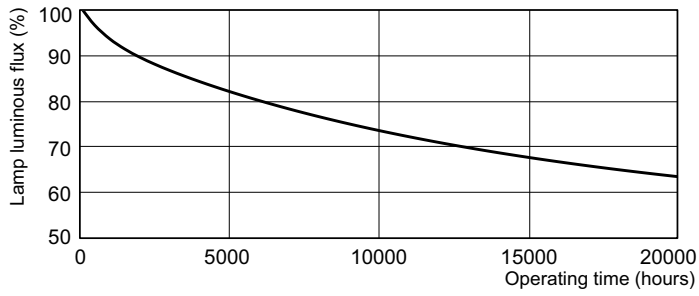
LDLE_TL-DSTD_0001-Life expectancy diagram



LDLE_TL-DSTD_0002-Life expectancy diagram

Preheat T8

Lifetime



LDLM_TL-DSTD_0001-Lumen maintenance diagram

